



**Luther
College**

2024 Educational Services Schedule

Contents

Introduction	01	Teaching and Learning	08
Our Mission	01	Academic Curriculum	10
Our Vision	01	Opportunities for all	10
Our Values	01	Year 7 Course Outline	10
Our Goals	01	Year 8 Course Outline	10
Facilities	02	Course Outline Year 9	11
Pastoral Care And Wellbeing	03	Year 10 Course Outline	12
House Program	03	VCE	12
Mission and Ministry	04	VCE Curriculum	13
Wellbeing Centre	04	VET	13
Co-Curricular Programs	05	Assessment and Reporting	13
Performing Arts – Instrumental Music	05	Homework Expectations	14
Performing Arts – Dance and Drama	05	School Details	15
Physical Education and Sport	06		
House and EISM Sport Carnivals	06		
Camps	06		
ASPIRE	07		
Service Learning	07		
Local and Global Connections	07		

Introduction

Since its commencement in 1964, Luther College has been a significant leader in Christian co-education, offering an educational environment where Christ is central, excellence is pursued, and relationships are valued. Our college motto, *Unctio Eius Docet* (The Holy Spirit is our Teacher) forged by our college's founders continues to inform and guide our school.

We are committed to the provision of an exceptional Lutheran education that recognises and nurtures the distinct link between pastoral care, wellbeing and student learning outcomes. Our curriculum and pedagogy will empower students to be citizens of change, global stewards and community builders as they develop the sense of agency they need to reshape the world.

With this in mind, we have set three significant, overarching goals; to drive innovative contemporary teaching and learning, to build a culture of inclusivity and equal opportunity, and to promote sustainable practices. Supporting these goals is a comprehensive strategy framework including mapped indicators, measurable action plans and an organisation-wide innovation strategy to keep us on track and accountable for the achievement of our goals.

Our Mission

Preparing students for life through Christ.

Our Vision

Exceptional teaching and learning will enable our students to confidently contribute to community.

Our Values

- Excellence
- Integrity
- Creativity
- Service
- Community

Our Goals

1. Drive innovative, contemporary teaching and learning.
2. Build a culture of inclusivity and equal opportunity.
3. Promote sustainable practices.

Facilities

Luther College is located in Melbourne's eastern suburb of Croydon Hills. Set on 30 acres, our lush and beautiful grounds together with an extensive range of historical and modern facilities including our Chapel, Building W Middle School, Senior Years Centre, Gymnasium, Performing Arts Centre, technology learning and creating spaces, playing fields and courts offer students the ideal place to learn and grow. Our classrooms are designed to provide a contemporary teaching and learning environment, ensuring our young people feel safe, comfortable and connected in an atmosphere that is nurturing, yet challenging and motivating.



Pastoral Care and Wellbeing

Care is at the heart of the educational experience at Luther College. Our Pastoral Care Program helps students feel connected, giving them a sense of belonging from the day they start at the college.

Our Pastoral Care Program starts early with a comprehensive transition program for students commencing in Year 6. It is our aim to provide an educational environment where students feel safe, supported, and appropriately challenged.

Heads of House, Home Group Mentors and Heads of Year Level work together with all staff to provide a supportive network of care for all students. Vertical, House-based Home Groups, operate within the college, each with students from Year 7 to Year 12, enriching the sense of connection and belonging for those within the college community.

The vertically structured Home Groups, led by Home Group Mentors and overseen by Heads of House, operate in partnership with the horizontal leadership from Heads of Year levels and subject teachers providing a rich 'tartan' of care. This structure provides an effective and efficient pastoral care network for all students at the college.

To partner with parents, the college hosts guest speakers around a range of topics regarding health and wellbeing. In addition, we provide parents with access to SchoolTV, a leading online parental resource for student wellbeing.

House Program

The House and Home Group system gives students the opportunity to interact with staff and students from various year levels, creating smaller communities within our larger Luther community, where they can form strong relationships and enrich their sense of connection and belonging. The House and Home Group system also supports the development of positive relationships and productive partnerships with members of our college community; students, staff and families. The Head of House together with each Home Group Mentor provides an environment where every student is known, cared for, and valued.

The Head of House is responsible for the oversight of the pastoral care of the students who are members of their House. They also oversee social and emotional behaviours, and the development of each individual student within their House. Working in partnership with Home Group Mentors, Heads of House are responsible for the care and monitoring of individual students and liaison with families.

When the college opened in 1964, there were two foundation Houses - Warran and Yarra, named after local waterways. Two years later, enrolment growth saw the introduction of two further Houses and a renaming exercise to reflect local landscapes. However, in a nice connection with the past, current students chose to bring back House names Warran and Yarra as we moved to six Houses in 2021.

- Birt (blue)
- Cheong (red)
- Nelson (yellow)
- Warran (orange)
- Wicklow (green)
- Yarra (purple)

Mission and Ministry

The Chapel represents the spiritual focus of the college and the worship program is led by our College Chaplain. The College Chaplain forms significant mentor-type relationships with the expectation of developing and nurturing of students' faith. This intentional development of spiritual formation and culture includes the worship and devotional life of the college, the theological development of staff, and engagement of students in service opportunities through projects and college partnerships. The Chaplain has a strong visible presence within the college and supports staff, student and parents in their spiritual wellbeing.

Wellbeing Centre

The Wellbeing Centre provides a service where students can access counselling, and psychological support. As members of the college's Pastoral Care and Wellbeing Team, School Counsellors provide counselling and support services for students from Year 7 to Year 12, working as part of the network of care which operates throughout the college.

The Wellbeing Team work to support all staff in the pastoral care of students. Counselling support is available to students by arrangement from their respective Head of House. Classroom teachers, Home Group Mentors and Heads of House all support students with their day to day concerns. Specialist counselling is also available for personal, academic and spiritual concerns through the School Counsellors.

At Luther College we have zero tolerance for child abuse and continue to be committed to providing a safe environment for all students. Respectful, positive and productive relationships are valued. It is these relationships that provide the safe, supportive and challenging educational environment that allows learning to occur. It is skills in developing these relationships that will prepare Luther students to make a valuable contribution to society both now and into the future.

Co-Curricular Programs

Lutheran education is about the holistic education of each child, which recognises the importance of the intellectual, physical, emotional, social and spiritual development of every student.

Our co-curricular programs provide students with opportunities to learn, challenge and grow. These programs drive student leadership, broaden horizons, build character, resilience and community. Co-curricular programs further develop our values of excellence, integrity, creativity, service and community by allowing students to be:

- curious and creative problem-solvers using inquiry, logic, resourcefulness, and innovation.
- reflecting on actions and processes, and transfer knowledge into new contexts to create alternatives or open up possibilities.
- celebrating their God-given gifts and talents with the community.
- seeking opportunities to give back to the community through service.
- able to communicate clearly and effectively.
- seeking opportunities to learn with others to accomplish common goals.

Luther College offers an extensive range of co-curricular opportunities. Spanning art and design, performing arts, music, sport, technology, food, STEAM, sustainability, reading, chess and more. Our students can dream big and aim high.

Performing Arts – Instrumental Music

A vibrant and engaging music culture exists within the Luther College community. Individual instrumental and singing tuition is available and students are encouraged to participate in our many bands, ensembles or choirs. Music tuition forms an integral part of the academic learning program and developing performance skills is an important part of learning music. Our students are given many opportunities to perform, including small and large school-based concerts, assemblies, celebration services and musicals. Community performance opportunities include eisteddfods and the biennial music tour which alternates between national and international destinations.

Performing Arts – Dance and Drama

The Performing Arts is a significant feature of school life at Luther College.

All students can participate in the House Performing Arts program and the college musical, both providing opportunity for students to perform, design, direct, choreograph and work backstage.

Students are challenged creatively and collaboratively in the performing arts House program. As student led activities, supported by House staff, the Drama and Performing Arts festivals are presented over two nights and judged by professionals in the performing arts industry.

As co-curricular activities, these opportunities enable students to expand on their academic learnings and further develop their skills in specific areas of interest.

Every two years Luther College students can be involved in a whole school musical. Students from all year levels can collaborate and combine their creative talents, presenting a musical for families and members of the public to enjoy.

Opportunities include lead and supporting roles, singing in the chorus, being a member of a dance group, playing in the orchestra to working as backstage or technical crew, or designing and constructing sets.

Physical Education and Sport

Luther College is a member school of the Eastern Independent Schools Melbourne (EISM), sporting association which offers sports competition against other independent schools in the eastern suburbs. Competitions are held weekly in the afternoons from Monday to Thursday, often commencing during the lunch break and concluding by the end of the school day. Students in Years 7 and 8 have a rotational sport program, Year 9 play throughout the year, and senior students can elect to participate in seasonal sports throughout the year.

Sports offered vary between year level but include volleyball, basketball, tennis, hockey, cricket, ultimate frisbee, softball, touch rugby, netball and soccer.

As well as weekly sport, students can represent the college in round robin days. There are various competitions held throughout the year for basketball, netball, and touch rugby.

House and EISM Sport Carnivals

Whole school carnivals in swimming, athletics (track and field) and cross country are held annually, with Houses competing against each other for House points. Students who perform well at the carnivals may be invited to represent Luther College in the corresponding EISM carnivals and may also compete in the EISM Champion of Champions Carnival held for both swimming and athletics.

Careers

As students approach the senior years of schooling they begin to narrow their subject choices and plan career pathways. During this time it is important for students to discuss career options with their parents, friends, family and teachers.

Senior School students begin their career exploration through small group work and individual meetings with a Careers Practitioner to plan pathways through senior school and beyond. Information evenings, individual support and advice are just some of the ways we are helping students find the path that is right for them.

In Year 10, students participate in a careers program, including a week of work experience, preparing them for the transition from Year 10 into VCE and from Year 12 into tertiary destinations and beyond.

Our Careers Practitioner provides up-to-date, high quality guidance and information to students and parents by appointment. Career resources can be found in the Careers Department at the entrance to the Senior Years Centre.

Camps

The learning experiences of students at Luther College are further developed by a variety of camps and tours. Some of these are part of the year level program and others are optional or related specifically to an area of study and subject.

The Year 7 camp is held early in the school year and is a key component of our transition program for Year 7 students. The camp, and its activities, are designed to provide students with the opportunities to get to know each other and their teachers.

In Year 8, students participate in a three-day camp in Term 1. This camp provides structured social activities that emphasise team building and positive peer relationships.

Luther Journey, a five-day outdoor education camp, is a feature in the Year 9 calendar. Luther College has developed a program that challenges our students physically, mentally, emotionally and spiritually. Luther Journey forms part of *The Rite Journey* program - a full year subject designed to support Year 9 students as they begin their own journey into adulthood.

Census 10 is a week-long experience based in the Melbourne CBD and undertaken by the Year 10s. With St John's Lutheran Church in Southbank as their headquarters, the Year 10s participate in a variety of programs that encourage them to experience the cultural, social and corporate aspects of a metropolitan city.

In Years 11 and 12, students will enjoy a variety of incursions, excursions and camps according to the subjects that they have chosen to study as part of their VCE.

ASPIRE

The Advanced Support Program and Individual Recognition of Excellence (ASPIRE) is designed to identify, support and recognise students who are pursuing performance excellence in the fields of Performing Arts or Sport.

The program provides the following for each student:

Identification	Recognise and support students who are pursuing excellence
Academic support	Support the combination of the sport or performance commitments with academic pursuits by aiding with timetabling, flexible assessment and alternative arrangements through the Pastoral Care support team.
Recognition	Recognise exemplary commitment and achievements in pursuit of excellence as a community, thereby personally recognising and celebrating student achievements and milestones.
Development	Provide personal development opportunities through participation in workshops designed to help build the mindset skills necessary for training, competition and/or performance. Building an understanding for high performance psychology and making connections with other like-minded individuals will help in building resilience, as well as preparing the mind and body's potential for peak performance.
Partners & Pathways	Create capacity to make important industry and area connections to broaden field participation, building partners and pathways from the grassroots up for the benefit of the community and individual progress.

Additional Co-curricular Opportunities

Service Learning

Service is a core value of a Luther College education. Service is faith active in love, involving the selfless giving and loving of others, making a difference in their lives by responding to their needs, and acting without expecting recognition or reward.

Luther College challenges students to grow in their understanding that service is not only a personal response to God's love but a broader response as part of one's humanity for the sake of justice for all. Therefore, students at Luther College learn about, and through, serving. This concept is known as Service Learning.

Service-learning opportunities are offered to all students at Luther College. One program in which the school is closely involved is the Karen refugee tutoring program. Karen is an area bordering the eastern region of Burma and Luther students gather to share afternoon tea, play games and complete homework with Karen refugee primary and lower secondary age children.

Luther College is actively involved in several community meals programs in the eastern suburbs. As part of our service-learning program, Luther College students and staff volunteer to serve disadvantaged people who attend The Dining Room Mission, Vive Cafe and The People's Pantry.

These are challenging experiences and encourage our students to consider the world around them with respect, tolerance, and a greater sense of understanding.

Local and Global Connections

Luther College recognises the importance of forming educationally relevant relationships, as well as providing rich learning experiences, both locally and abroad. Luther College students and staff have a diverse range of opportunities to engage in meaningful relationships with international students, colleagues and organisations.

These include immersion in language and culture, performance opportunities and the externally organised Bayrischer Jugending German Exchange Program. The college also enjoys a partnerships with Nanjing Number 12 Middle School in China and Evangelisches Gymnasium Hermannswerder in Potsdam, Germany. Partnerships also provide opportunities for professional and pedagogical growth for staff with Groevenbeek Christelijk College in the Netherlands. These experiences promote intercultural understanding, lifelong learning, lasting relationships and the development of the global citizen.

Teaching and Learning

Today's learner will live in a future workforce that is unlike any to have come before. Learning at Luther College prepares young people for life through Christ.

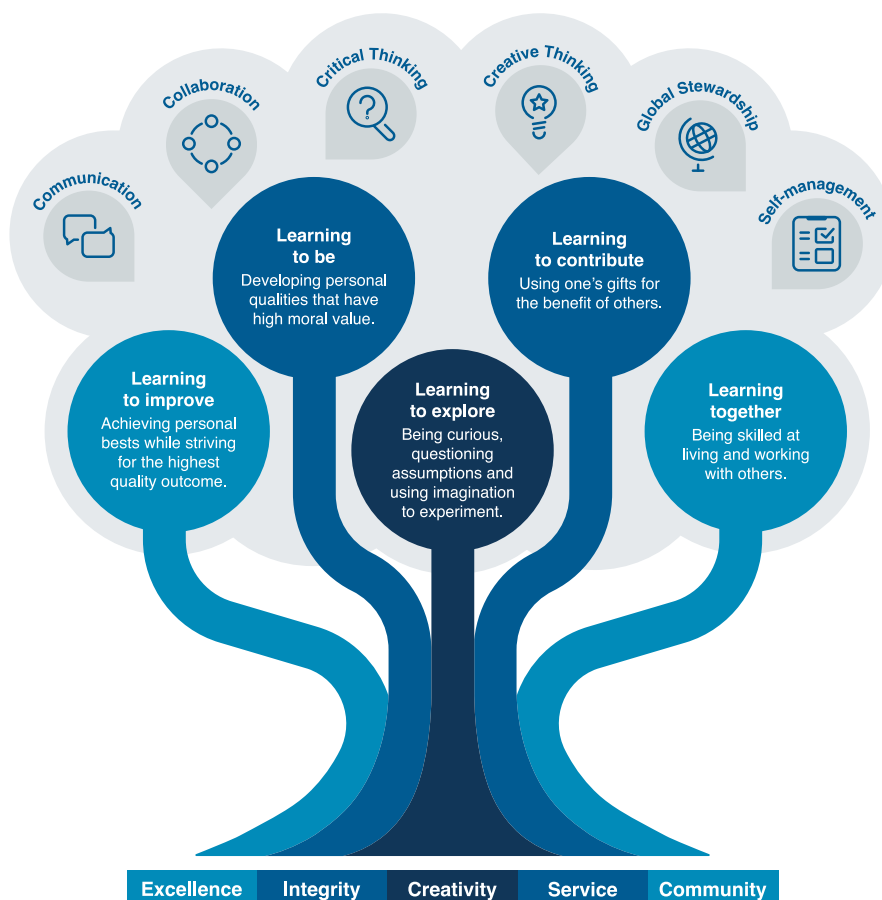
We know that young people learn best when they feel safe, comfortable and connected in an atmosphere that is nurturing, yet challenging and motivating. Our young people are facing the most significant disruption in the world of work since the industrial revolution and, as such, education must build capabilities that will best position our learners for tomorrow.

Rich, personalised learning experiences embedded in a contemporary and innovative curriculum that encourages

student agency will develop the essential knowledge, skills and attributes they need to meet these challenges and experience an exceptional future.

At the heart of our educational offerings are rich, personalised learning experiences embedded in a contemporary and innovative curriculum that encourages student agency.

The college has an extensive offering of elective subjects designed to allow students to be curious and explore their areas of interest. These multi-disciplinary experiences help prepare our students for VCE and life after Luther.



The Luther Learner

The Luther Learner

Excellence - Learning to improve

Achieving personal bests while striving for the highest quality outcome.

We believe that all learners should be:

- supported to pursue their personal best and experience success.
- engaged in authentic learning experiences that develop deep, analytical, and critical thinking.
- curious and creative problem-solvers using inquiry, logic, resourcefulness, and innovation.
- encouraged to generate new ideas, possibilities, and action.
- guided through mastery of skills and understanding.
- coached to value a culture of feedback, reflection, and growth.
- willing to take risks and see mistakes as opportunities.

Integrity - Learning to be

Developing qualities of the whole person that have high moral value.

We believe that all learners should be:

- increasingly independent and self-managed.
- reflective, self-aware, and accountable for their actions.
- resilient, embracing challenges with determination and optimism.
- guided to explore deep moral and ethical understandings.
- actively improving emotional, spiritual, and physical wellbeing.

Creativity - Learning to explore

Being curious, questioning assumptions and using imagination to experiment.

We believe that all learners should be:

- encouraged to imagine possibilities and connect ideas.
- guided to explore situations and generate alternatives.
- supported to experiment with options and actions when seeking solutions.
- adjusting and explaining their thinking and identifying the thinking behind choices, strategies and actions taken.
- reflecting on actions and processes, and transfer knowledge into new contexts to create alternatives or open up possibilities.

Service - Learning to contribute

Using one's gifts for the benefit of others.

We believe that all learners should be:

- celebrating their God-given gifts and talents with the community.
- seeking opportunities to give back to the community through service.
- encouraged to develop understandings relating to issues of global stewardship.
- demonstrating empathy and a sense of responsibility.
- encouraged to make significant contributions to the global village.

Community - Learning together

Skilled at living and working with others.

We believe that all learners should be:

- able to communicate clearly and effectively.
- aware of commonalities and differences, creating connections with others, and cultivating mutual respect.
- seeking opportunities to learn with others to accomplish common goals.
- positively engaging with activities and community events.
- understanding, trusting, collaborative, and supportive community members.

Academic Curriculum

Luther College values the opportunity to partner with parents to support, guide and shape young people and provide learning experiences and opportunities to support, encourage, challenge and grow students as lifelong learners.

There is an expectation that all Luther College students will give of their best. We expect students to be focused on, and committed to, purposefully planning to improve their learning, and to put in place positive practices that will help them to become contributors to our society.

The college fosters a culture of learning where excellence across the educational program is encouraged, supported and rewarded.

The comprehensive educational offerings provide an extensive core and elective program for the younger students expanding into a large range of VCE subjects for senior students, providing a wide range of pathways and opportunities for students to explore, be challenged and strive for academic excellence.

The online learning management system, Omnia, provides an all-in-one mobile-responsive community portal. Omnia enables students, together with their parents, to be actively and positively engaged in their learning.

Opportunities for all

The curriculum at Luther College is broadly based and covers all Key Learning Areas as outlined in the Australian Curriculum in Years 7 to 10 and the Victorian Certificate of Education (VCE) at Years 11 and 12. Students also have the opportunity to study some Vocational Education and Training (VET) subjects alongside their VCE at Years 11 and 12.

The college offers German and Mandarin, with languages compulsory in Years 7, 8 and 9. Students can audition for the Performing Arts Music or Dance/Drama streams in Year 7.

In Year 9, students undertake *The Rite Journey*, a course designed within a framework of celebration and ceremony that offers the important acknowledgement of students' transition from childhood to beginning adulthood.

The college provides a wide range of pathways and opportunities for students to explore, be challenged and strive for academic excellence. Electives offerings are driven by student choice and we are committed to the annual review of electives to ensure that they are relevant, meaningful, purposeful and engaging.

Year 7 Course Outline

The Year 7 curriculum is designed to provide students with comprehensive learning experiences across all Key

Learning Areas as outlined in the Australian Curriculum, with the addition of Christian Studies.

Course Studies (Full Year)

- English
- Mathematics
- Science
- Humanities
- Languages: German or Chinese
- Health and Physical Education
- Christian Studies
- Sport

Core Studies (Semester Length)

- Music
- Drama
- Art
- Food Technology
- Design Technology – Materials (Wood, Metal)
- 3D Art/ Ceramics

The Humanities course includes an integrated range of skills and learning from Geography and History.

Students who already have a passion for the performing arts are encouraged to apply for our Year 7 Performing Arts Stream. This is an accelerated stream to extend students in their skills and comprehension of the performing arts. It is an auditioned stream that runs for the entire year. Students are also welcome to apply for music scholarships, with limited places available.

Literacy Enhancement Lessons are offered to students requiring intensive language support. This program will be offered to identified students within Year 7 and Year 8, instead of Languages.

Year 8 Course Outline

Through our Year 8 curriculum we provide a broad-based educational experience, with students experiencing each of the Key Learning Areas as outlined in the Australian Curriculum.

Core Studies (Full Year)

- English
- Mathematics
- Science
- Humanities – Geography, History and Civics and Citizenship
- Health and Physical Education
- Languages: German or Chinese
- Christian Studies
- Sport

Core Studies (Semester Length)

- Economics and Business
- Digital Technology

Example Elective Studies

- Printmaking and Drawing
- Ceramics and Sculpture
- Exploring Art and Ideas
- Graphic Design
- Making Music
- Music Technology
- Drama
- Top Acts – Drama
- Top Acts – Music
- Food Technology
- Creative Timber Products
- Creative Metal Products
- Textiles Design Studio
- Live Your Own Learning
- The Memory Code

In Year 8, students will continue to study German or Chinese intensively as a full year course. Selected students will continue to attend Literacy Enhancement Lessons.

Elective subjects offered to Year 8 students will give them an opportunity to enhance and extend their initial experiences.

Year 9 Course Outline

In Year 9, students at Luther College undertake compulsory core subjects, in line with the Australian Curriculum. Students are also able to choose semester length elective subjects provided in each of the Key Learning Areas.

Course Studies (Full Year)

- English
- Mathematics
- Science
- Sport
- Geography
- *The Rite Journey* (a combination of Christian Studies, Service Learning and Personal Development which includes the Luther Journey experience.)

Semester Courses

- Core Commerce
- Core History

All students will have the opportunity to study five semester-length elective subjects during the course of the year.

Students will choose;

- 1 elective from The Arts Learning Area
- 1 elective from the Technologies Learning Area
- 3 general elective choices – which may also include The Arts and Technologies offerings.

Example Electives – Technologies – Design and Digital

- Coding
- Cyber Security
- Food Technology
- Knit and Knot
- Metal
- Textiles
- Timber
- Web Development

Example Electives – The Arts

- Acting for Screen
- Art
- Ceramics
- Dance
- Music Performance
- Music Technology
- Musical Production
- Photography
- Video Production
- Visual Communication and Design

Example Electives – General

- Astronomy
- Studies of Outdoor & Physical Education (SOAPE)
- Sustainable Futures
- Innovating for the Creative Future
- Conspiracy Theories
- Psychology
- MoneyBall

Year 9 Learning Plus is designed to support the individual learning needs of students who have been identified with significant language related disabilities. Students will usually have been in Year 7 and Year 8 Literacy Enhancement Lessons.

Year 10 Course Outline

Year 10 is an important opportunity to explore different learning areas and further develop skills and knowledge in preparation for the VCE. Students are encouraged to choose subjects based on their interests, skills and abilities whilst ensuring a wide breadth of study.

The Year 10 course has been structured so that elective units are semester-based, rather than year long, providing students with a greater range of choices.

- Students study six compulsory core subjects.
- Students also study four semester length electives.
- Study of Languages is year-long and counts as two electives.

VCE Acceleration Unit 1-2 study is also the equivalent to two elective units. Acceleration is by application only.

Students in Year 10 also undertake one week of Work Experience and participate in our City Experience program, Census 10..

Core Studies (Full Year)

- English
- Mathematics:
 - Mathematics
 - General Mathematics
 - Challenge Mathematics
- Health and Physical Education
- Christian Studies

Core Studies (Semester)

- Science:
 - Science
 - Challenge Science
- History
 - The Modern World and Australia

Example Elective Studies (Semester)

- App and Games Development
- Biochemistry and Engineering
- Business Builders
- CAD, Designing and Fabricating
- Chinese
- Contemporary Photography
- Creativity and My World
- Design Technology – Metal
- Design Technology - Timber
- Film Making
- Food for Fitness

- Forensic Science
- German
- Global Correspondent
- History of Power
- Illustration and Specialist Techniques
- Industrial and Architectural Design
- Luther Institute of Sport
- Multimodal Communication
- Music Performance
- People and the Planet
- Robotics and Artificial Intelligence
- Textiles
- Theatreworks
- Yarra Valley Food Trail

VCE

Luther College offers a broad range of VCE studies and students are encouraged to consider areas of personal interest and aptitude that also provide them with any pre-requisites they may need for future tertiary studies.

Satisfactory Completion of the VCE

To qualify for the award of the VCE, students must satisfactorily complete at least 16 units of study including:

- Three units from the VCE English group (English, Literature), including a Unit 3-4 sequence.

AND

- At least three sequences of Unit 3-4 studies other than English, which may include any number of English sequences once the English requirement has been met.

Satisfactory completion of individual units of study

Satisfactory completion of each unit is based on achievement of learning outcomes defined in the official VCAA course document. These outcomes include both knowledge and skills.

A normal program for Luther College students will include six subjects in Year 11 (English Units 1-2 compulsory) and five subjects in Year 12 plus a Christian Studies-based unit.

Year 11 students may study an accelerated Unit 3-4 subject in their program by approval.

All Year 11 and 12 students are involved in the Christian Studies program and Multimodal Communication is also offered for selected students who require support in their English curriculum.

VCE Curriculum

Luther College offers students the opportunity to select from a broad range of VCE subjects, such as:

- Accounting
- Applied Computing (Units 1 & 2)
- Art Creative Practice
- Art Making and Exhibiting
- Biology
- Business Management
- Chemistry
- Chinese, Language, Culture and Society
- Chinese 2nd Language
- Dance
- Economics
- English
- English Literature
- Environmental Science
- Food Studies
- Geography
- German
- Global Politics
- Health and Human Development
- History - Modern (Units 1 & 2)
- History – Revolutions (Units 3 & 4)
- Software Development (Units 3 & 4)
- Legal Studies
- Mathematics
 - General Mathematics
 - Mathematical Methods
 - Specialist Mathematics
- Media
- Music Performance
- Outdoor and Environmental Studies
- Physical Education
- Physics
- Product Design and Technology– Textiles
- Product Design and Technology – Wood, Metal and Plastic
- Psychology
- Theatre Studies
- Visual Communication Design

VET

Students may undertake a combined VCE /VET program. This involves a basic VCE plus VET modules undertaken at various TAFE's or provider schools where a broad range of programs are offered. These programs also count as VCE units.

Assessment and Reporting

The purpose of assessment and reporting is to help students to identify their strengths and weaknesses, and to encourage them in their ongoing development as lifelong learners.

Assessment

Assessment is the ongoing process of gathering, analysing and reflecting on evidence to make informed and consistent judgments to improve future student learning. Assessment for improved student learning and deep understanding requires a range of assessment practices to be used with three overarching purposes:

- assessment for learning – occurs when teachers use inferences about student progress to inform their teaching
- assessment as learning – occurs when students reflect on and monitor their progress to inform their future learning goals
- assessment of learning – occurs when teachers use evidence of student learning to make judgments on student achievement against goals and standards

Reporting

Reporting is the process which provides information for students and parents on the progress, understanding and performance of students. The college will provide continuous Progressive Feedback to parents of each child in Years 7 -12 throughout each semester. Progressive Feedback, located on Omnia, is:

- readily understandable to those responsible for the student and give an accurate and objective assessment of the student's progress and achievement.
- an assessment of the student's achievement reported as A, B, C, D and E, clearly defined against specific learning standards relative to the performance of the student's peer group at the school.
- Progressive Feedback and Summaries are printable directly from the Omnia page.

Homework Expectations

It is the general policy of the college that homework be set at all year levels, while the amount and type is determined by each teacher.

Homework at Luther College is for:

- following up, practising, learning and consolidating classwork.
- doing projects and assignments of a larger nature over a period of time.
- developing responsible attitudes to the management and use of time.

Normally homework should have priority over other activities, but it should not unduly isolate students from family life. If homework cannot be completed on a particular night, a note from parents explaining this should be brought to college the next day and shown to each teacher affected.

Students are encouraged to set themselves goals, as well as those set by teachers, regarding work to be completed each night.

School Details

Luther College

1-39 Plymouth Road
Croydon Hills, Victoria 3136

Phone: (03) 9724 2000

Email: reception@luther.vic.edu.au

Website: luther.vic.edu.au

ABN: 38 843 939 110

Principal: Mrs Jacqui Layfield

College Reception Open Hours:

During Term 8.15am – 4.30pm Monday to Thursday
8.15am – 4.00pm Friday

School Holidays 9am – 2pm

School Specific Contacts

Student Absences Phone: 03 9724 2042 or
Email: studentreception@luther.vic.edu.au

Principal's Office principalsoffice@luther.vic.edu.au

Enrolments admissions@luther.vic.edu.au

Business Department accounts@luther.vic.edu.au

Uniform Shop Phone: (03) 9725 3714 or
Email: lcgs@noone.com.au

Luther College

Plymouth Road
Croydon Hills Vic 3136

Phone: (03) 9724 2000

www.luther.vic.edu.au



**Luther
College**